



MAPLES FLOWERS

WWW.MAPLESFLOWERS.CO.UK

FLOWERS

NOVEMBER 2022

Fall Into Our...

AUTUMN COLLECTION

COSY WINTER WEDDING IDEAS - LETTERBOX FLOWERS - AUTUMN BOUQUETS

£2.00 or
FREE
TO MAPLES FLOWERS
REWARD CARD MEMBERS

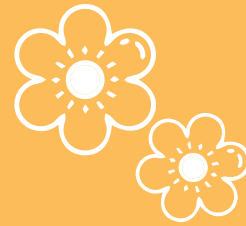




MAPLES FLOWERS

WWW.MAPLESFLOWERS.CO.UK

Award Winning Wedding Flowers



We have had our busiest year ever at Maples Flowers of which I am incredibly proud of my team and can't thank them enough for all their hard work. We have been part of so many amazing wedding days through the Summer of 2022. Despite it being the hottest Summer on record we have delivered the most stunning and freshest flowers to all of our happy couples who have got married.

Now as we move into the winter months we have a packed few months as people come to us for the winter warming bouquets, take part in our famous and sell-out workshops. This year we have a packed calendar for Autumnal and Christmas workshops and this year we are adding even more to each class but still holding them at last years prices to help people at this difficult financial time.

Thank you all once again for your business and we hope to see you soon either in-store or at one of our wedding shows.

Shane Maple
Business Owner

FLOWER OF THE MONTH

Chinese Lanterns

These are very popular at this time of year in Autumnal arrangements, these Chinese Lanterns are incredibly distinctive and rich in colour. They are easily identifiable by the large, bright orange to red papery covering over its fruit, which resembles paper lanterns.





WHY DO LEAVES CHANGE COLOUR?

Green leaves appear green because of the presence of the pigment chlorophyll, which is key to photosynthesis. In the UK, cold winters pose a risk to the leaves of broadleaf trees and other perennials, and so these plants drop their leaves in a controlled fashion to reduce injuries and conserve energy. This event is usually triggered by the declining day length and falling temperatures of autumn. Leaf abscission (the technical term for the dropping of leaves) begins with the degradation of chlorophyll. As the green fades, yellow and orange pigments known as carotenoids are revealed in the leaves of many species. In other plants, pigments called anthocyanins accumulate in the leaves at this time, giving them shades of red and purple. Some of the most beautiful fall foliage features both types of pigments, often with one color giving way to the next as the season progresses. Eventually all the leaves are dropped, and the plant goes dormant for the long winter months.

FEATURED WEDDING

This month we feature a fairy-tale wedding in the 16th Century setting of The Great Barn, Headstone Manor in Harrow. A truly magical and spectacular venue for a dream wedding day.

This couple put their trust in Maples Flowers to make thier dreams become reality with a wedding on a classic theme.

The rich colours in the bouquet really add somehting to this beautiful wedding and make it very unique and special.









VENUE

The Great Barn &
Headstone Manor

FLOWERS

Maples Flowers

COSY WINTER WEDDINGS

Lots of people always ask us the ideal way to add warmth to their winter wedding. Getting married outside of the main summer wedding season can be beneficial for lots of reasons. You may find that your venue has a lot more availability out of peak season and the prices may be more affordable. More of your guests might have better availability as there will be less holiday commitments planned. One of the main reasons is to have an alternative look and feel to your wedding on a colder and darker winters day.



to select one main accent colour to create warmth and depth to your special day. Adding more than one darker colour can create the possibility for clashes of colour. For example, if you take a traditional neutral wedding palette of white Ivory and greens, and just add one feature flower of darker red, instantly you will have created a warm winter tone to classical wedding flowers. This demonstrates that you don't need to throw all contemporary wedding ideas out of the window when you are planning a winter wedding,

We can all see with our own eyes. The Rich colour palette that nature has to offer as we turn into the autumnal months. Then as winter approaches, vibrant reds and deep orange colours, play a vital role in the colour palette. Be cautious when you are adding darker colours to your winter wedding colour scheme. You only need



you simply take the popular and traditional wedding colour pallets and just make minor adjustments adding in one darker colour to create a whole different effect for winter.

Another common mistake when planning a winter wedding is the overkill of the dark colour. If you are picking a deep burgundy red as your winter colour, then only look to use this in a few areas of the wedding. For example,



you may choose to have a feature of flower in all of your arrangements, you may also add it as the colour of a chair drape at your venue. However, when you continue to add this colour to everything else such as your bridesmaids dresses, the napkins on the table, the stationary on the table, then it can become too much and overpowering. Bold winter colours are great to use, but should only be used in moderation.

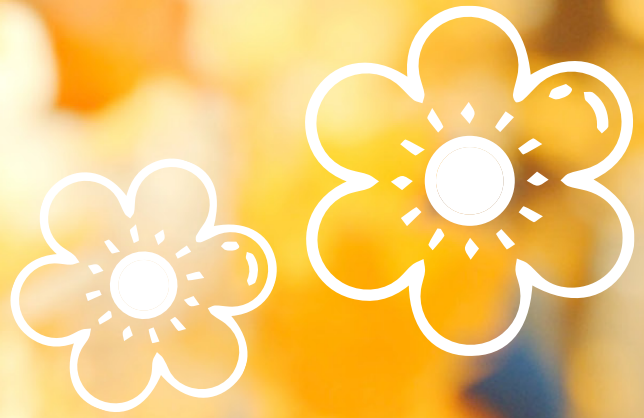
On a final point when looking to add colour to warm up,

your winter wedding is to focus on the word warming. Colours that trick the mind into thinking they are warm, always work better for a winter wedding. This is true of colours such as red, burgundy, deep orange yellow . The colours which trick the mind into thinking of a colder environment, such as pale blues, royal blues and too much white or silver can create a cold ambience to your wedding day.



Shane Maple
Business Owner





Fall Into Our...

AUTUMN COLLECTION



Pumpkin

FROM £55

Fall Into Our...
AUTUMN COLLECTION



MAPLES FLOWERS

WWW.MAPLESFLOWERS.CO.UK



The rich autumnal tones in this bouquet, really does make a statement, made with roses, blooms, poppy heads, rose hip all set amongst a selection of seasonal foliage's.

Fall Into Ours...
AUTUMN COLLECTION

Aurelia
FROM £55


MAPLES FLOWERS
WWW.MAPLESFLOWERS.CO.UK



A rich mix of red roses, red spray rose, amaranthus, hypericum, eustoma with a lovely rich selection of foliage including eucalyptus and mixed grasses.

Autumn
FROM £60

Fall Into Our...
AUTUMN COLLECTION



Full of Autumnal Shades this striking bouquet comes complete with pampas grass, and preserved autumnal foliage's with a mix of eucalyptus and mixed grasses.

Fall Into Ours...
AUTUMN COLLECTION

Fall
FROM £55


MAPLES FLOWERS
WWW.MAPLESFLOWERS.CO.UK



Deep brassica, asclepia, blooms, kensin gardens rose, viburnum dark blue with with a lovely rich selection of foliages including mixed grasses.

Fifth Avenue

FROM £60

Fall Into Our...
AUTUMN COLLECTION



MAPLES FLOWERS

WWW.MAPLESFLOWERS.CO.UK



This soft and pretty bouquet is full of beautiful tones including fifth Avenue roses, antirrhinum, astrantia, allium, phlox with a lovely rich selection of foliage including berried eucalyptus

Fall Into Ours...
AUTUMN COLLECTION

Haze
FROM £55


MAPLES FLOWERS
WWW.MAPLESFLOWERS.CO.UK



A striking bouquet of luscious white roses, white thistle, interesting scabiosa, white limonium and white eustoma all set amongst a selection of seasonal foliage's.

Arrangements

FROM £15

Fall Into Our...
AUTUMN COLLECTION



Fall Into Ours...
AUTUMN COLLECTION

Autumn Pots
FROM £25



THE ULTIMATE WEDDING KEEPSAKE

PERSONALISED LED NEON SIGN YOURS TO KEEP

SIGNS FROM £100

20% OFF WITH CODE "MAP20"

3D Neon
Signs

Mr & Mrs
Brewer



01442 506510 PHONE

3dneonsigns.co.uk WEB

info@3dneonsigns.co.uk E-MAIL

@3dneonsigns FACEBOOK

@3dneonsigns INSTAGRAM

See More, Click Here



We have many years of experience working with of the areas premier cake suppliers for weddings.

If you would like to get a quote on flowers for your wedding cake then please get in touch.

You could even try edible flowers for your cake and wedding reception.

EARN REWARDS EVERYTIME YOU SPEND



Collect 4 points for every £1 you spend to treat yourself to the things you love

ORDER YOUR FREE CARD NOW



GREAT WEDDING VENUES

KNEBWORTH HOUSE

Maples Flowers are proud to work with many great wedding venues in Hertfordshire and Knebworth House is in our top 10 favourites. The beautiful hotel is surrounded by stunning grounds in the picturesque countryside on the outskirts of Knebworth.



Ready for a ceremony at Knebworth House with Maples Flowers



Maples Flowers is the recommended florist for the venue and have been part of many happy weddings at the venue, from smaller intimate occasions to large and lavish events. If you are getting married at Knebworth House talk to us about how we can turn your wedding dreams into reality at this beautiful venue.



JUST
£30

Order Online

LETTERBOX FLOWERS

A FRESH SELECTION OF STEMS READY TO ARRANGE
No bulky parcels, just through the letterbox

EST  2020

JUST A LITTLE
candle



AVAILABLE TO SAMPLE IN STORE AT MAPLES FLOWERS

ORDER CANDLES ONLINE



MAPLES FLOWERS

WWW.MAPLESFLOWERS.CO.UK



Award Winning Wedding Flowers



MAPLES FLOWERS

WWW.MAPLESFLOWERS.CO.UK

WWW.MAPLESFLOWERS.CO.UK

INFO@MAPLESFLOWERS.CO.UK

39 WOOD LANE END, HEMEL HEMPSTEAD, HP2 4RA

01442 800812

Flowers is a monthly magazine compiled and produced by Maples Flowers
To advertise or feature please call 01442 800812